

Caleb-A



Traditional (standard)



Craftsman (optional)



3,205 total sq.ft. | 1,880 finished sq.ft.

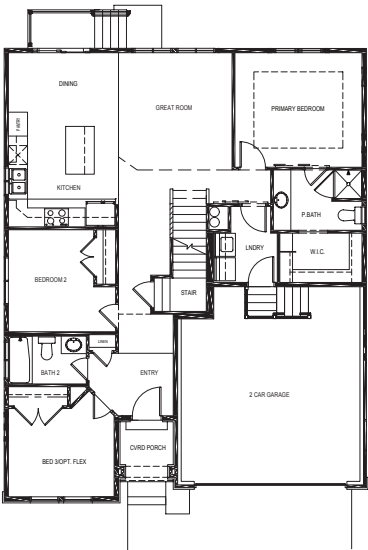


5

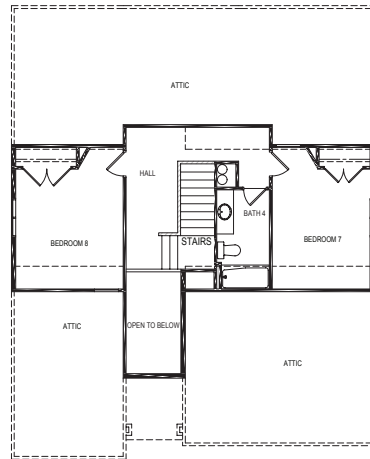


3

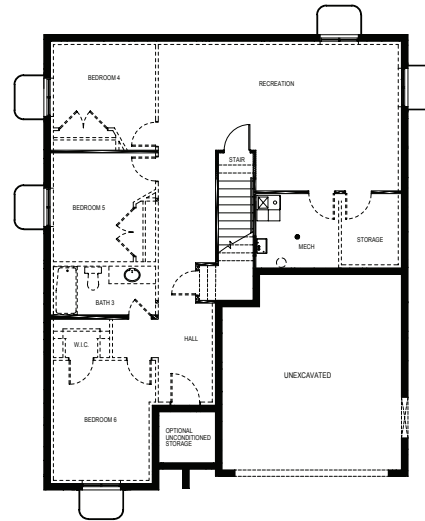
FIRST FLOOR



SECOND FLOOR



BASEMENT



SPECIFICATIONS

First Floor	1,320 sq.ft.
Second Floor	560 sq.ft.
Basement	1,325 sq.ft.
Total Sq. Ft.	3,205 sq.ft.
Total Finished	1,880 sq.ft.

Bedrooms	5
Total Possible	(8)
Bathrooms	3
(Total Possible)	(4)

Width 38' - 0"
Depth 47' - 6"