

Caleb-A



Traditional (standard)



Craftsman (optional)

 | **3,205** total sq.ft. | **1,880** finished sq.ft. |  | **5**

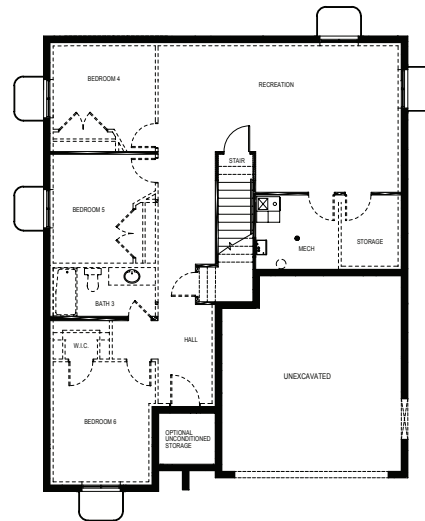
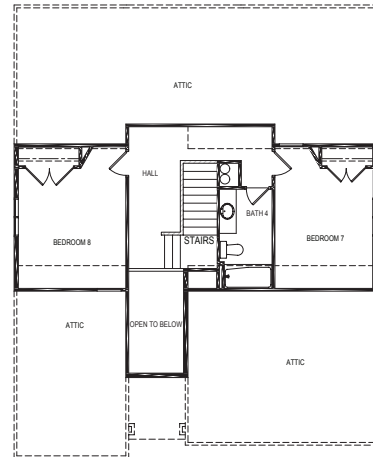
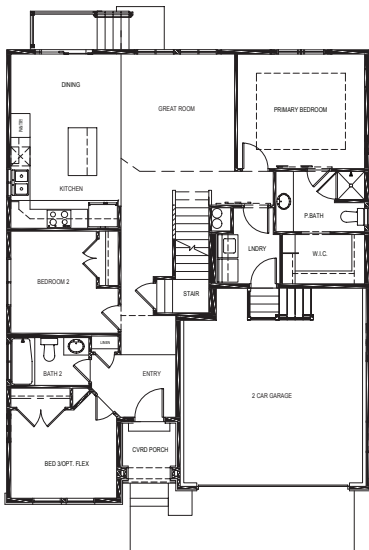
 | **3**

FIRST FLOOR

SECOND FLOOR

BASEMENT

SPECIFICATIONS



First Floor 1,320 sq.ft.
 Second Floor 560 sq.ft.
 Basement 1,325 sq.ft.
 Total Sq. Ft. 3,205 sq.ft.
 Total Finished 1,880 sq.ft.

Bedrooms 5
 Total Possible (8)
 Bathrooms 3
 (Total Possible) (4)

Width 38' - 0"
 Depth 47' - 6"