

Caleb



Traditional (standard)



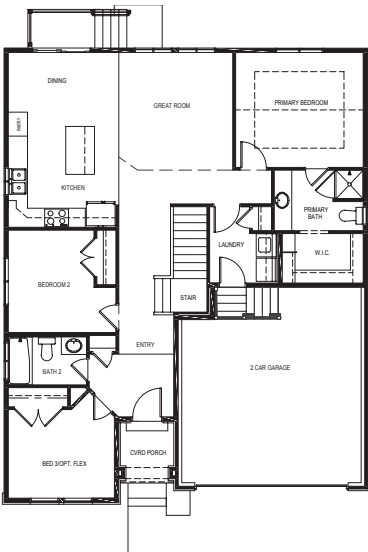
Craftsman (optional)

 | **2,650** total sq.ft. | **1,341** finished sq.ft.

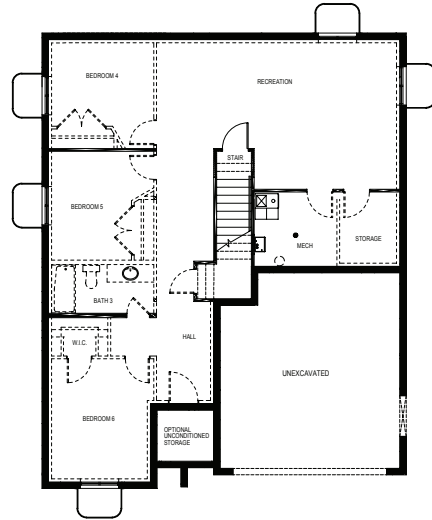
 | **3**

 | **2**

FIRST FLOOR



BASEMENT



SPECIFICATIONS

First Floor 1,322 sq.ft.
 Basement 1,328 sq.ft.
 Total Sq. Ft. 2,650 sq.ft.
 Total Finished 1,341 sq.ft.

Bedrooms 3
 (Total Possible) (6)
 Bathrooms 2
 (Total Possible) (3)

Width 38' - 0"
 Depth 47' - 6"