

Peyton



Traditional (standard)



Craftsman (optional)

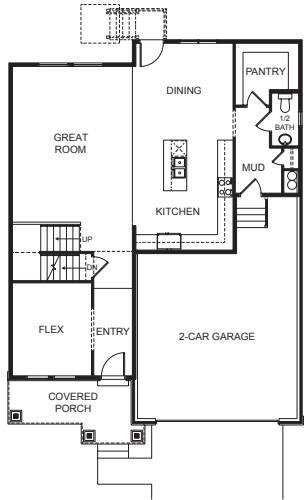


Farmhouse (optional)

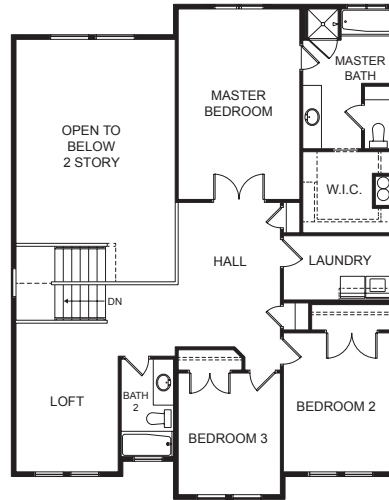


Scandinavian (optional)

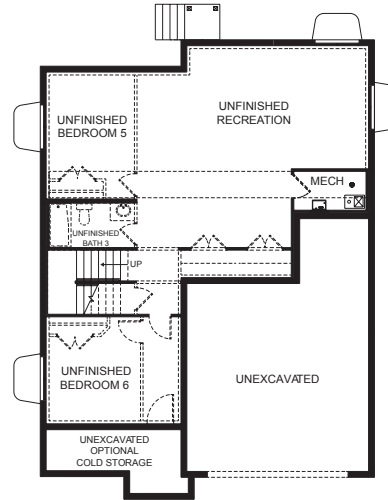
FIRST FLOOR



SECOND FLOOR



BASEMENT



SPECIFICATIONS

First Floor	1,210 sq.ft.
Second Floor	1,307 sq.ft.
Basement	1,219 sq.ft.
Total Sq. Ft.	3,736 sq.ft.
Total Finished	2,517 sq.ft.

Bedrooms	4
(Total Possible)	(6)
Bathrooms	2.5
(Total Possible)	(3.5)

Width	38'-0"
Depth	52'-3"