

# Peyton



Traditional (standard)






Craftsman (optional)



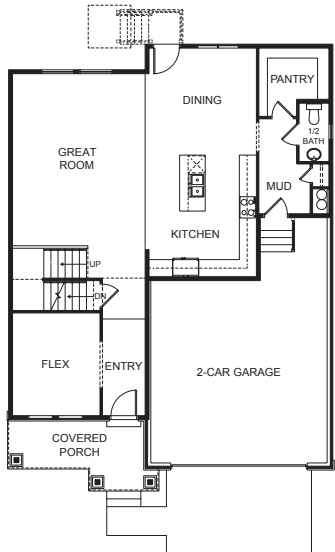
Farmhouse (optional)



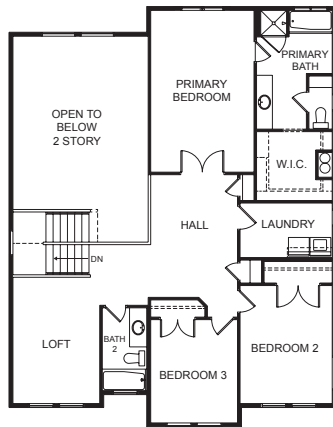
Scandinavian (optional)


**3,810** total sq.ft. | **2,591** finished sq.ft.
  **3**
 **2.5**

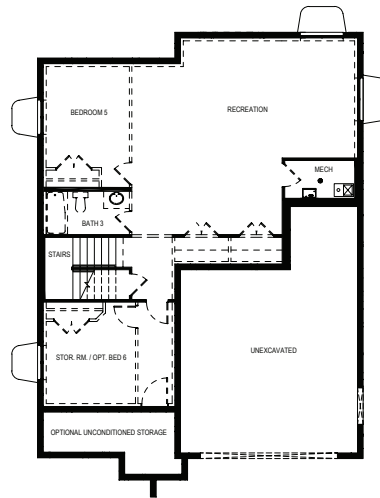
## FIRST FLOOR



## SECOND FLOOR



## BASEMENT



## SPECIFICATIONS

First Floor	1,210 sq.ft.
Second Floor	1,381 sq.ft.
Basement	1,219 sq.ft.
<b>Total Sq. Ft.</b>	<b>3,810 sq.ft.</b>
<b>Total Finished</b>	<b>2,591 sq.ft.</b>

Bedrooms	3
(Total Possible)	(6)
Bathrooms	2.5
(Total Possible)	(3.5)

Width	38' - 0"
Depth	52' - 3"