

Peyton



Traditional (standard)



Craftsman (optional)



Farmhouse (optional)



Scandinavian (optional)



3,739 total sq.ft. | **2,520** finished sq.ft.

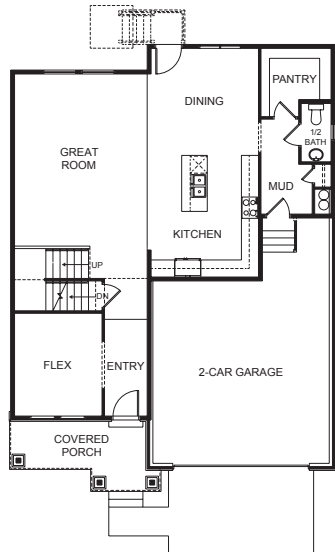


3

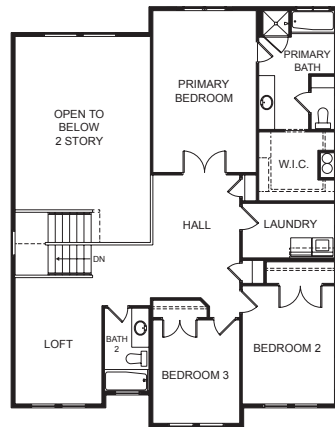


2.5

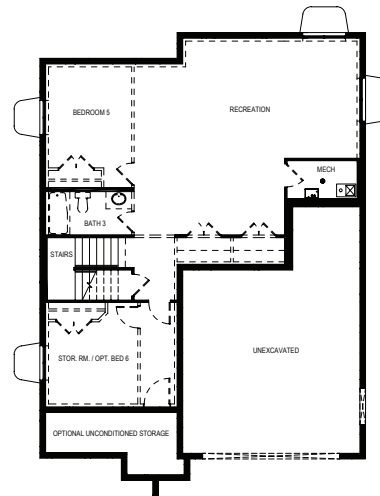
FIRST FLOOR



SECOND FLOOR



BASEMENT



SPECIFICATIONS

First Floor	1,210 sq.ft.
Second Floor	1,310 sq.ft.
Basement	1,219 sq.ft.
Total Sq. Ft.	3,739 sq.ft.
Total Finished	2,520 sq.ft.

Bedrooms	3
(Total Possible)	(6)
Bathrooms	2.5
(Total Possible)	(3.5)

Width	38' - 0"
Depth	52' - 3"