

Peyton



Traditional (standard)



Craftsman (optional)

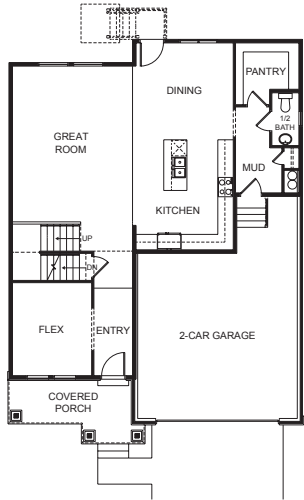


Farmhouse (optional)

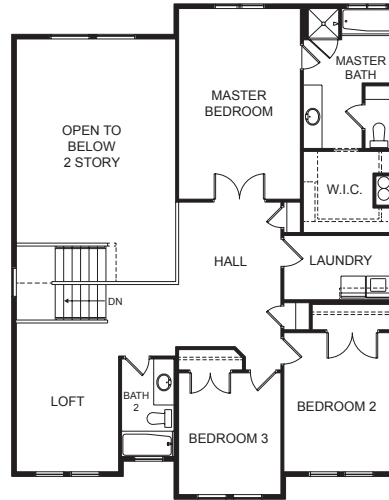


Scandinavian (optional)

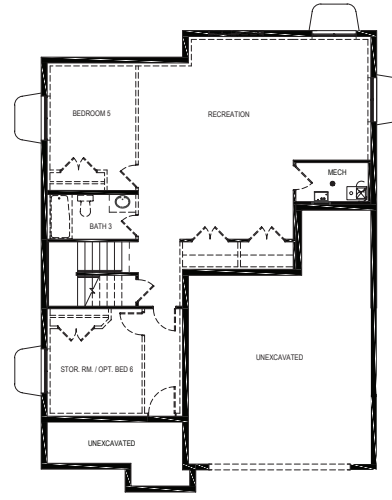
FIRST FLOOR



SECOND FLOOR



BASEMENT



SPECIFICATIONS

| | |
|-----------------------|--------------|
| First Floor | 1,210 sq.ft. |
| Second Floor | 1,307 sq.ft. |
| Basement | 1,219 sq.ft. |
| Total Sq. Ft. | 3,736 sq.ft. |
| Total Finished | 2,517 sq.ft. |

| | |
|-------------------------|-------|
| Bedrooms | 4 |
| (Total Possible) | (6) |
| Bathrooms | 2.5 |
| (Total Possible) | (3.5) |

| | |
|--------------|----------|
| Width | 38' - 0" |
| Depth | 52' - 3" |