

Drew



Traditional (standard)



Craftsman (optional)



Prairie (optional)



2,780 total sq.ft. | **1,408** finished sq.ft.

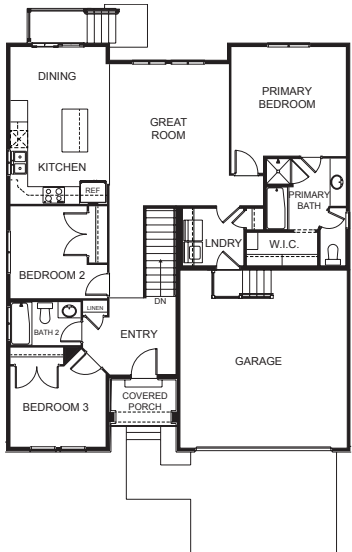


3

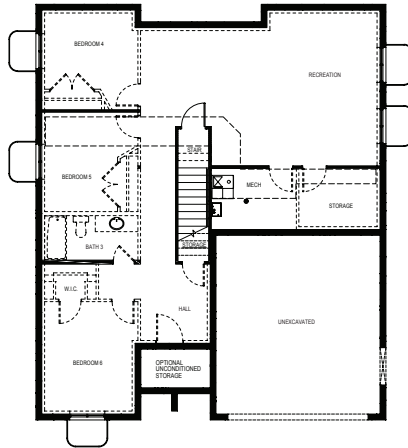


2

FIRST FLOOR



BASEMENT



SPECIFICATIONS

First Floor 1,386 sq.ft.
 Basement 1,394 sq.ft.
 Total Sq. Ft. 2,780 sq.ft.
 Total Finished 1,408 sq.ft.

Bedrooms 3
 (Total Possible) (6)
 Bathrooms 2
 (Total Possible) (3)

Width 40' - 0"
 Depth 47' - 6"