

Drew



Traditional (standard)

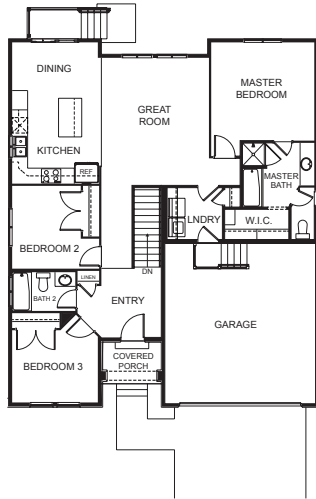


Craftsman (optional)

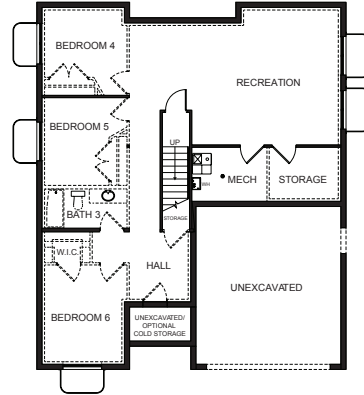


Prairie (optional)

FIRST FLOOR



BASEMENT



SPECIFICATIONS

First Floor 1,386 sq.ft.
Basement 1,376 sq.ft.
Total Sq. Ft. 2,780 sq.ft.
Total Finished 1,404 sq.ft.

Bedrooms 3
(Total Possible) (6)
Bathrooms 2
(Total Possible) (3)

Width 40' - 0"
Depth 47' - 6"