

Drew



Traditional (standard)

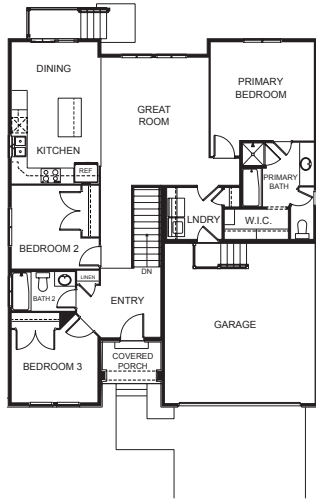


Craftsman (optional)

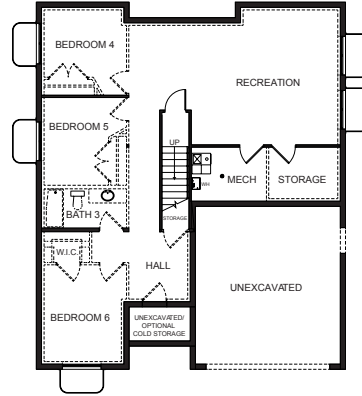


Prairie (optional)

FIRST FLOOR



BASEMENT



SPECIFICATIONS

First Floor	1,386 sq.ft.	Bedrooms	3	Width	40'-0"
Basement	1,376 sq.ft.	(Total Possible)	(6)	Depth	47'-6"
Total Sq. Ft.	2,780 sq.ft.	Bathrooms	2		
Total Finished	1,404 sq.ft.	(Total Possible)	(3)		