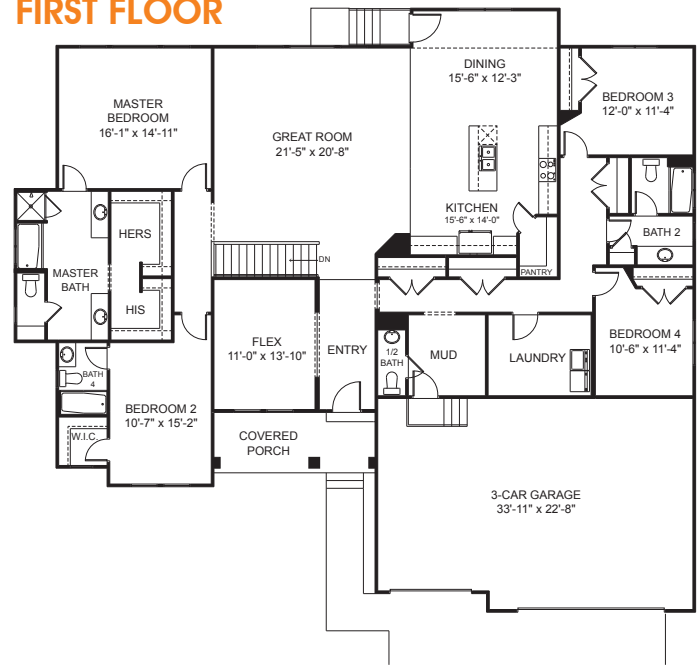
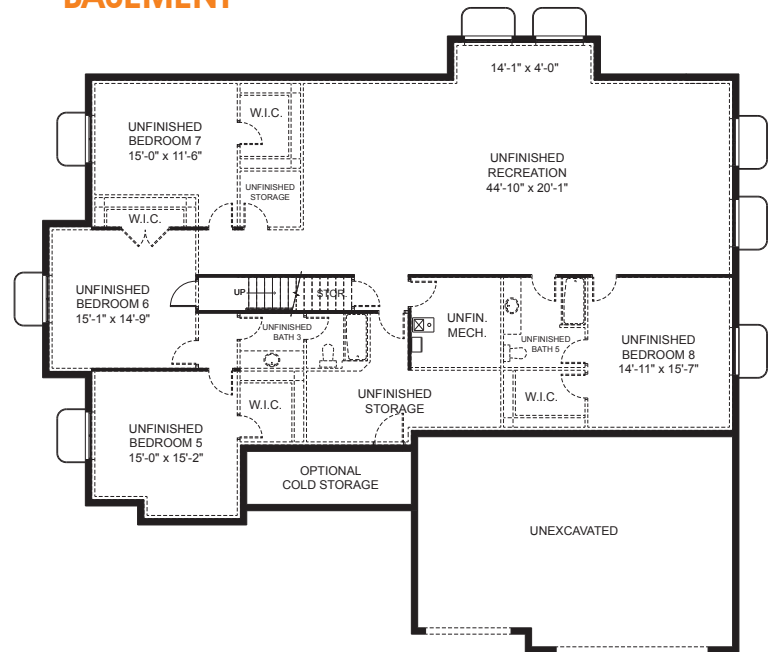




FIRST FLOOR



BASEMENT



SPECIFICATIONS

First Floor	2,932 sq.ft.	Bedrooms	4	Width	73'-4"
Basement	2,918 sq.ft.	(Total Possible)	(8)	Depth	65'-0"
Total Sq. Ft.	5,871 sq.ft.	Bathrooms	3.5		
Total Finished	2,953 sq.ft.	(Total Possible)	(5.5)		