

# Quincy-B



Traditional (standard)



Craftsman (optional)



Farmhouse (optional)



Scandinavian (optional)



4,644 total sq.ft.

2,849 finished sq.ft.

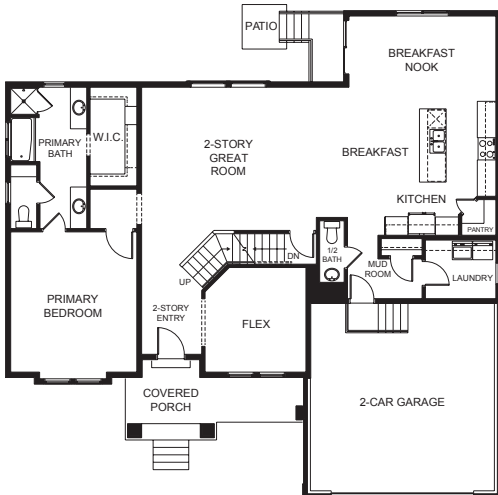


4

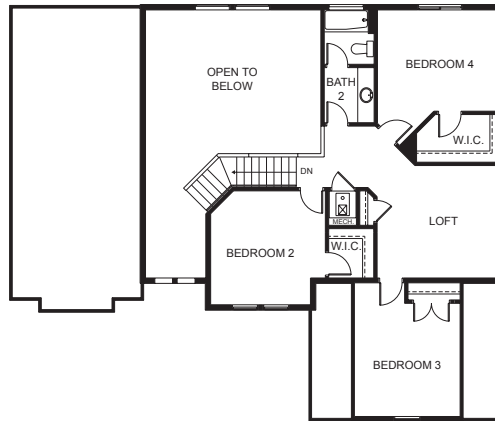


2.5

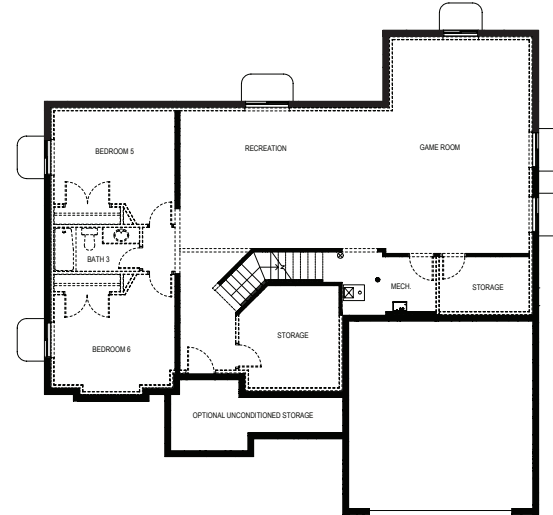
## FIRST FLOOR



## SECOND FLOOR



## BASEMENT



## SPECIFICATIONS

|                       |                     |
|-----------------------|---------------------|
| First Floor           | 1,789 sq.ft.        |
| Second Floor          | 1,060 sq.ft.        |
| Basement              | 1,795 sq.ft.        |
| <b>Total Sq. Ft.</b>  | <b>4,644 sq.ft.</b> |
| <b>Total Finished</b> | <b>2,849 sq.ft.</b> |

|                         |       |
|-------------------------|-------|
| <b>Bedrooms</b>         | 4     |
| <b>(Total Possible)</b> | (6)   |
| <b>Bathrooms</b>        | 2.5   |
| <b>(Total Possible)</b> | (3.5) |

|              |          |
|--------------|----------|
| <b>Width</b> | 55' - 6" |
| <b>Depth</b> | 54' - 6" |