

Quincy-B



Traditional (standard)



Craftsman (optional)

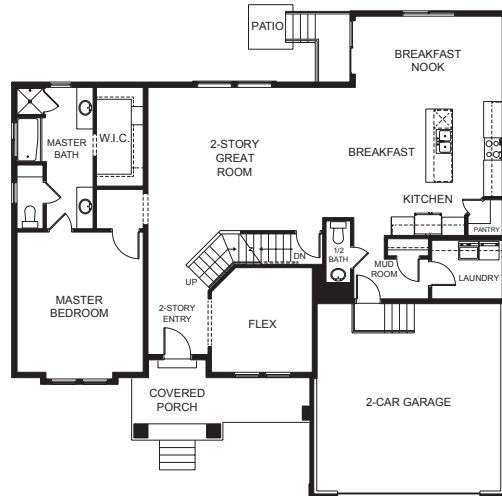


Farmhouse (optional)

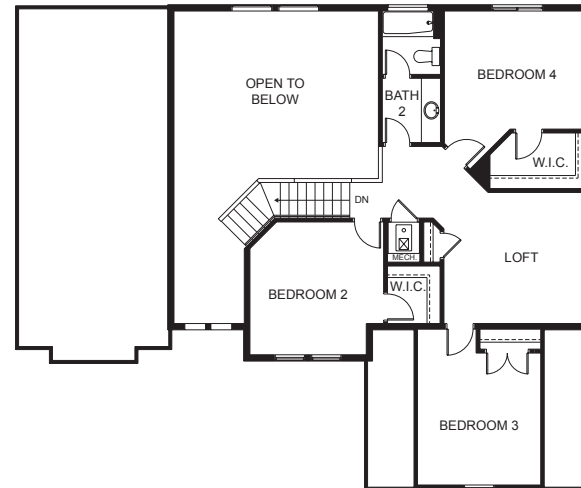


Scandinavian (optional)

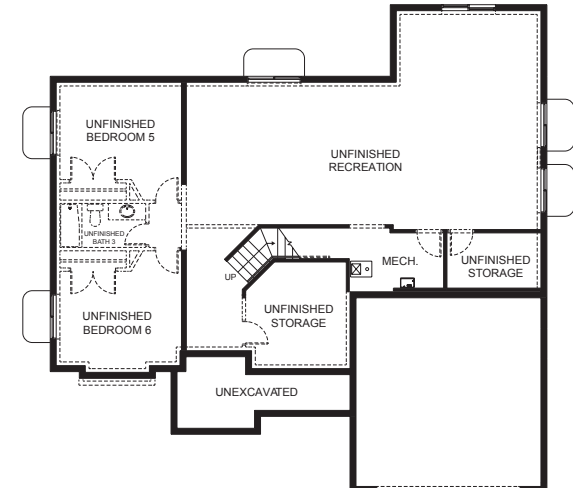
FIRST FLOOR



SECOND FLOOR



BASEMENT



SPECIFICATIONS

First Floor	1,789 sq.ft.	Bedrooms	4	Width	55' - 6"
Second Floor	1,013 sq.ft.	(Total Possible)	(6)	Depth	54' - 6"
Basement	1,795 sq.ft.	Bathrooms	2.5		
Total Sq. Ft.	4,597 sq.ft.	(Total Possible)	(3.5)		
Total Finished	2,802 sq.ft.				