

# Katrina-A



Traditional (standard)



Craftsman (optional)



4,818 total sq.ft. | 2,749 finished sq.ft.

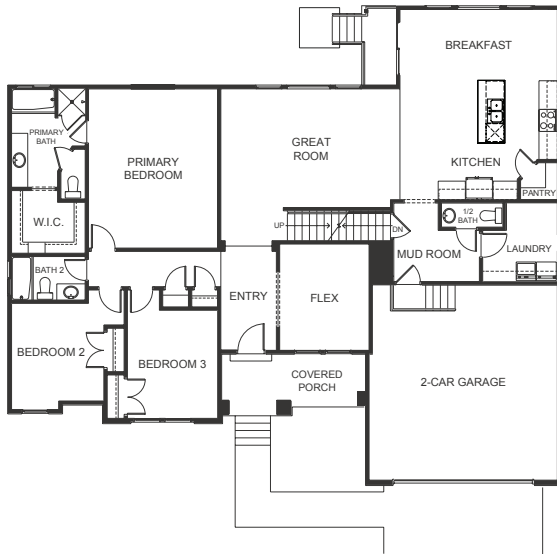


5

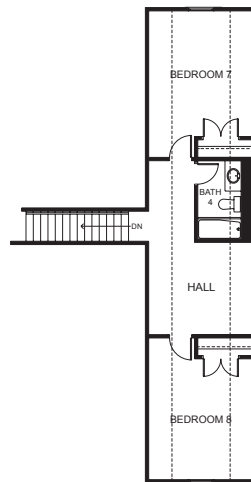


3.5

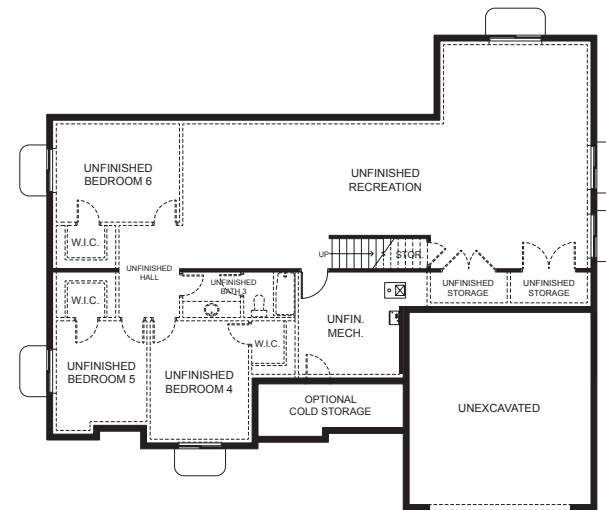
## FIRST FLOOR



## SECOND FLOOR



## BASEMENT



## SPECIFICATIONS

First Floor 2,062 sq.ft.  
 Second Floor 687 sq.ft.  
 Basement 2,069 sq.ft.  
 Total Sq. Ft. 4,818 sq.ft.  
 Total Finished 2,749 sq.ft.

Bedrooms 5  
 (Total Possible) (8)  
 Bathrooms 3.5  
 (Total Possible) (4.5)

Width 62' - 6"  
 Depth 54' - 0"