

Hailey-C



Traditional (standard)



Craftsman (optional)



4,445 total sq.ft. | 2,539 finished sq.ft.

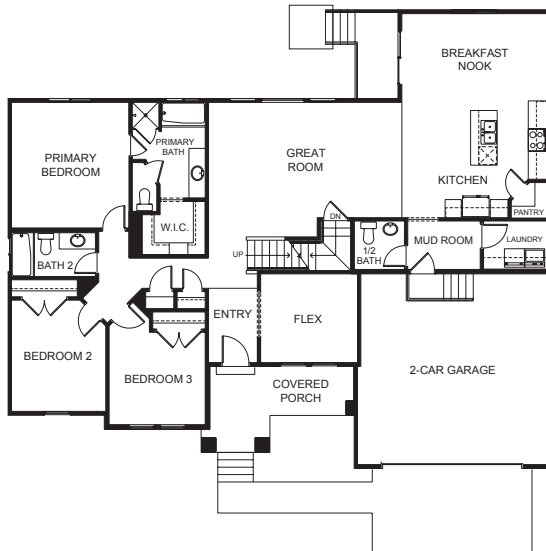


5

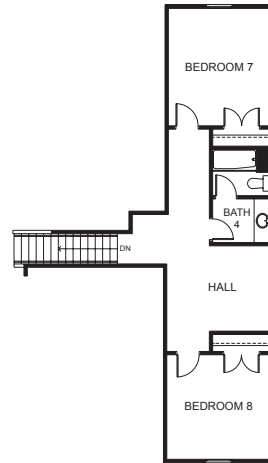


3.5

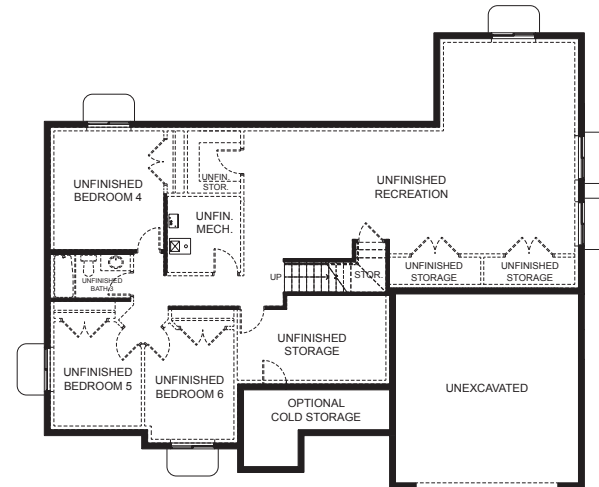
FIRST FLOOR



SECOND FLOOR



BASEMENT



SPECIFICATIONS

First Floor 1,900 sq.ft.
 Second Floor 639 sq.ft.
 Basement 1,906 sq.ft.
 Total Sq. Ft. 4,445 sq.ft.
 Total Finished 2,539 sq.ft.

Bedrooms 5
 (Total Possible) (8)
 Bathrooms 3.5
 (Total Possible) (4.5)

Width 61' - 0"
 Depth 50' - 0"