

Hailey-B



Traditional (standard)



Craftsman (optional)



Farmhouse (optional)



3,808 total sq.ft.

1,925 finished sq.ft.

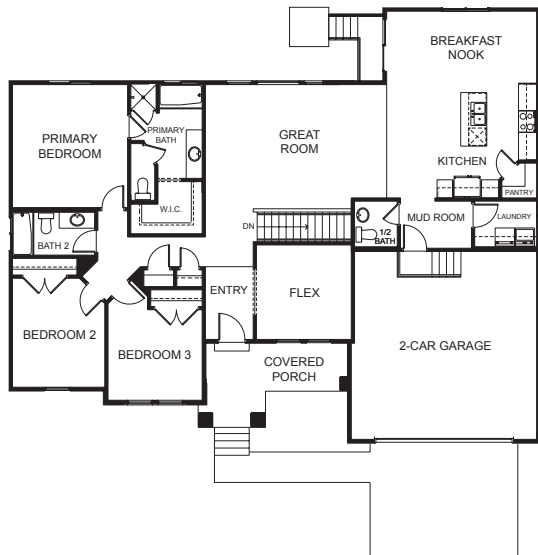


3

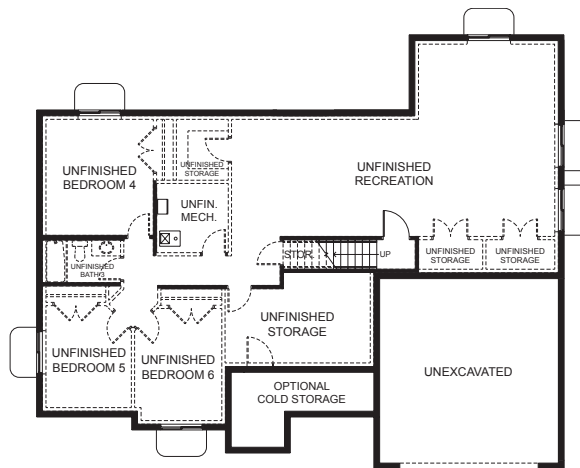


2.5

FIRST FLOOR



BASEMENT



SPECIFICATIONS

First Floor 1,901 sq.ft.
 Basement 1,907 sq.ft.
 Total Sq. Ft. 3,808 sq.ft.
 Total Finished 1,925 sq.ft.

Bedrooms 3
 (Total Possible) (6)
 Bathrooms 2.5
 (Total Possible) (3.5)

Width 61' - 0"
 Depth 50' - 0"