

# Natalie



Traditional (standard)



Craftsman (optional)



Farmhouse (optional)



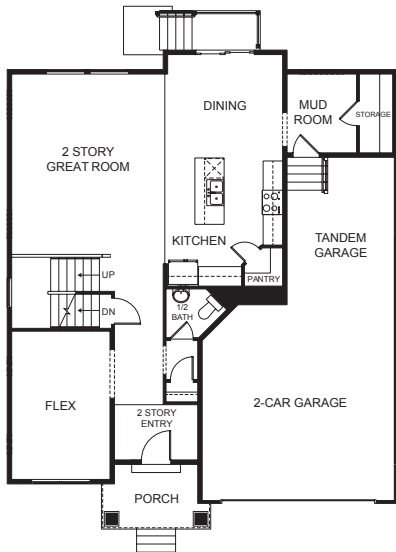
Scandinavian (optional)

 | **3,573** total sq.ft. | **2,395** finished sq.ft.

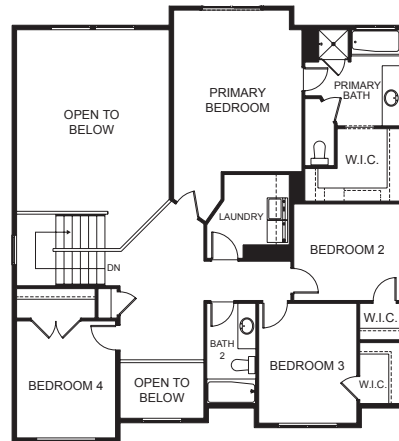
 | **4**

 | **2.5**

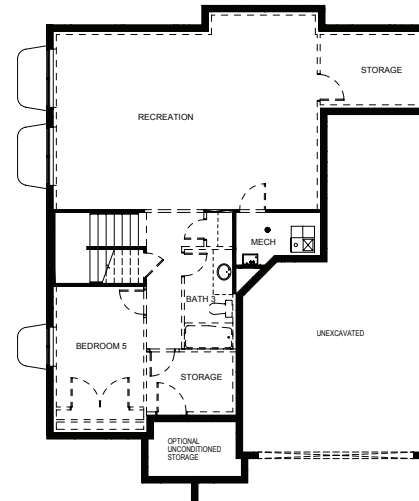
## FIRST FLOOR



## SECOND FLOOR



## BASEMENT



## SPECIFICATIONS

First Floor 1,176 sq.ft.  
 Second Floor 1,219 sq.ft.  
 Basement 1,178 sq.ft.  
 Total Sq. Ft. 3,573 sq.ft.  
 Total Finished 2,395 sq.ft.

Bedrooms 4  
 (Total Possible) (5)  
 Bathrooms 2.5  
 (Total Possible) (3.5)

Width 40' - 0"  
 Depth 49' - 0"