

# Lucas



Traditional (standard)



Craftsman (optional)



Farmhouse (optional)



3,380 total sq.ft. | 2,161 finished sq.ft.

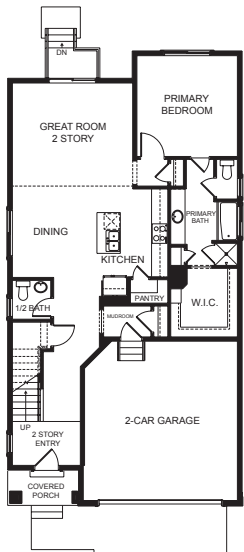


4

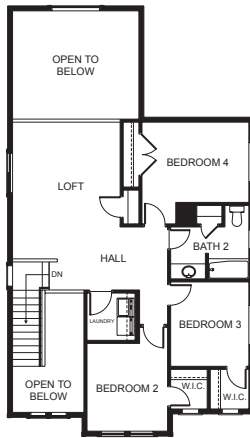


2.5

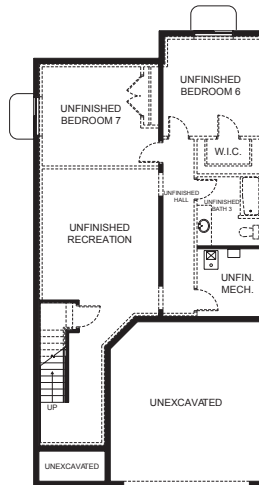
## FIRST FLOOR



## SECOND FLOOR



## BASEMENT



## SPECIFICATIONS

First Floor 1,215 sq.ft.  
 Second Floor 946 sq.ft.  
 Basement 1,219 sq.ft.  
 Total Sq. Ft. 3,380 sq.ft.  
 Total Finished 2,161 sq.ft.

Bedrooms 4  
 (Total Possible) (7)  
 Bathrooms 2.5  
 (Total Possible) (3.5)

Width 29' - 10"  
 Depth 58' - 0"