

# Megan

Main Floor	2,201 sq. ft.	Width	70'-0"
Basement	2,214 sq. ft.	Depth	50'-0"
Total Sq. Ft.	4,436 sq. ft.		
Total Finished	2,222 sq. ft.		



Traditional (standard)



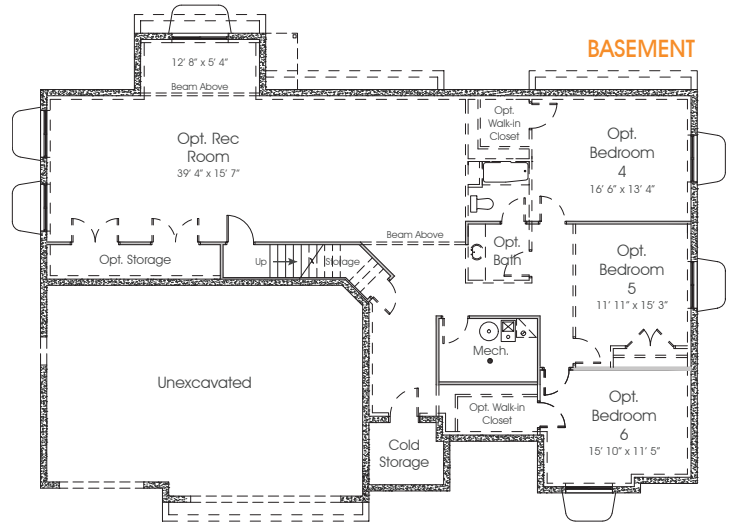
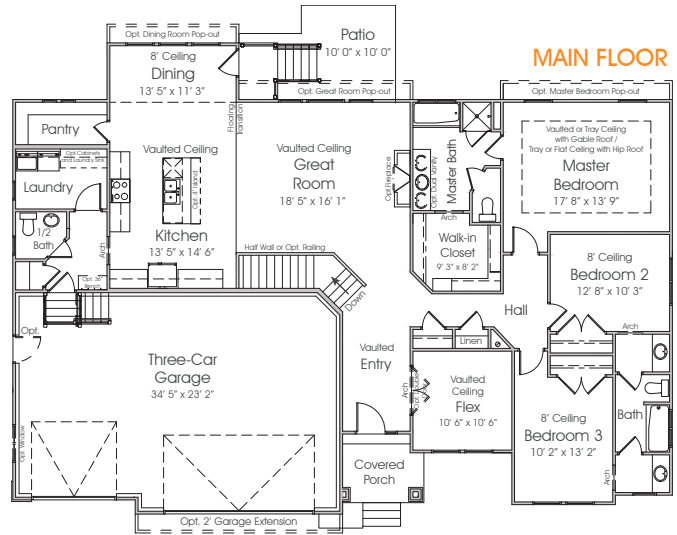
Craftsman (optional)



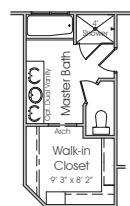
Bungalow (optional)



Prairie (optional)



**OPT. MASTER BATH 1**



**OPT. MASTER BATH 2**



**OPT. MASTER BATH 3**

