

Nora



Traditional (standard)



Craftsman (optional)



Farmhouse (optional)



Scandinavian (optional)



3,623 total sq.ft. | 2,438 finished sq.ft.

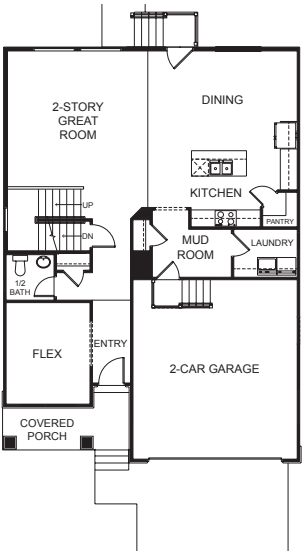


3

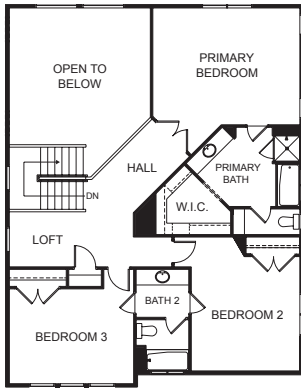


2.5

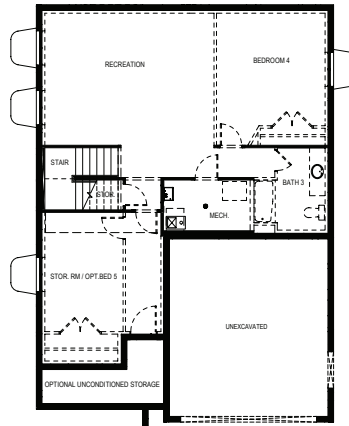
FIRST FLOOR



SECOND FLOOR



BASEMENT



SPECIFICATIONS

First Floor	1,176 sq.ft.
Second Floor	1,262 sq.ft.
Basement	1,185 sq.ft.
Total Sq. Ft.	3,623 sq.ft.
Total Finished	2,438 sq.ft.

Bedrooms	3
(Total Possible)	(5)
Bathrooms	2.5
(Total Possible)	(3.5)

Width 35' - 0"
Depth 49' - 0"