

# Nathan



Traditional (standard)



Craftsman (optional)



Farmhouse (optional)



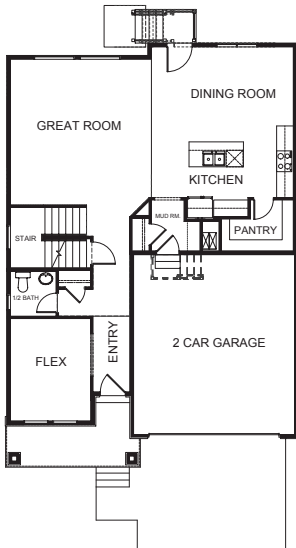
Scandinavian (optional)



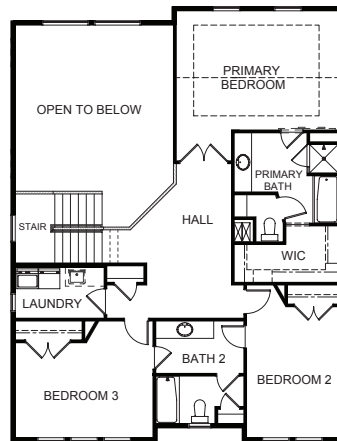
3,584 total sq.ft. | 2,408 finished sq.ft.



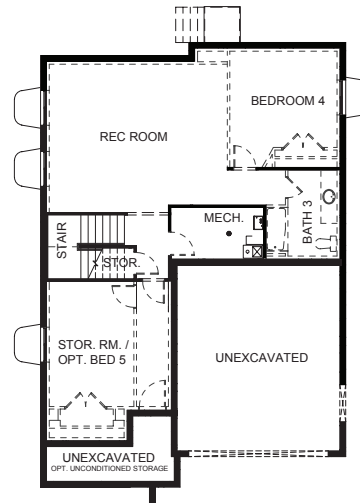
## FIRST FLOOR



## SECOND FLOOR



## BASEMENT



## SPECIFICATIONS

First Floor	1,164 sq.ft.
Second Floor	1,244 sq.ft.
Basement	1,176 sq.ft.
<b>Total Sq. Ft.</b>	<b>3,584 sq.ft.</b>
<b>Total Finished</b>	<b>2,408 sq.ft.</b>
<b>Bedrooms</b>	<b>3</b>
<b>(Total Possible)</b>	<b>(5)</b>
<b>Bathrooms</b>	<b>2.5</b>
<b>(Total Possible)</b>	<b>(3.5)</b>
<b>Width</b>	<b>35' - 0"</b>
<b>Depth</b>	<b>51' - 0"</b>