

Nathan



Traditional (standard)



Craftsman (optional)



Scandinavian (optional)



3,511 total sq.ft. | **2,335** finished sq.ft.

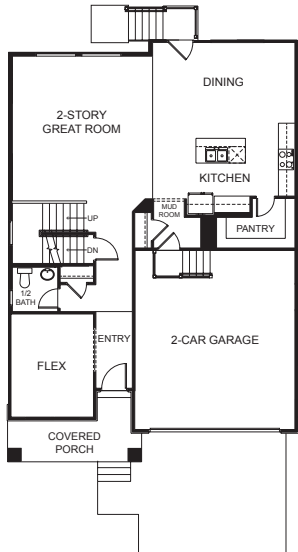


3

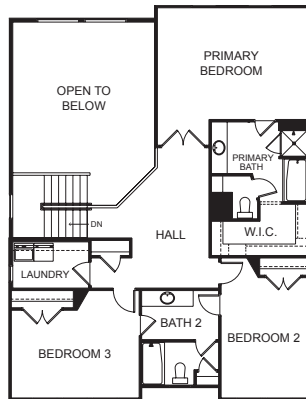


2.5

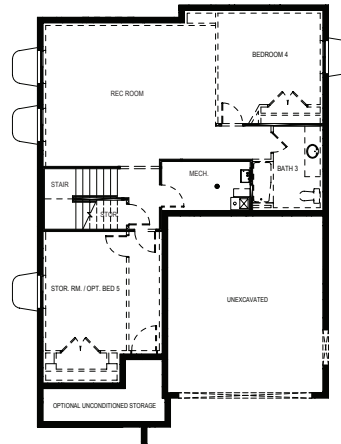
FIRST FLOOR



SECOND FLOOR



BASEMENT



SPECIFICATIONS

First Floor 1,164 sq.ft.
Second Floor 1,171 sq.ft.
Basement 1,176 sq.ft.
Total Sq. Ft. 3,511 sq.ft.
Total Finished 2,335 sq.ft.

Bedrooms 3
(Total Possible) (5)
Bathrooms 2.5
(Total Possible) (3.5)

Width 35' - 0"
Depth 51' - 0'