

Morgan



Traditional (standard)



Craftsman (optional)



Farmhouse (optional)



Scandinavian (optional)



3,361 total sq.ft. | 2,250 finished sq.ft.

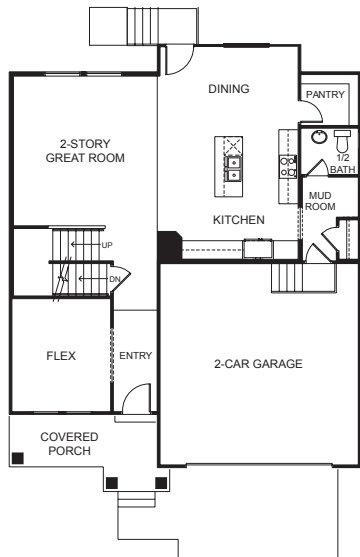


3

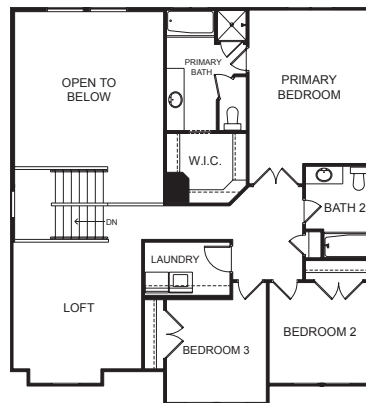


2.5

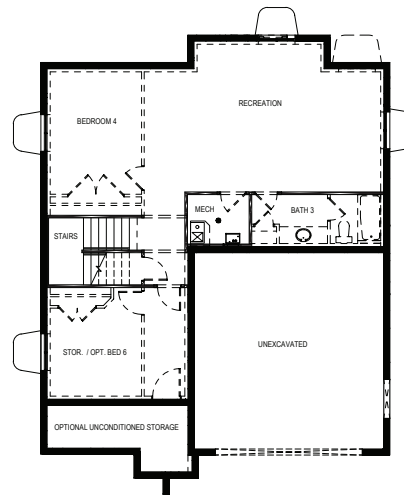
FIRST FLOOR



SECOND FLOOR



BASEMENT



SPECIFICATIONS

First Floor 1,102 sq.ft.
Second Floor 1,148 sq.ft.
Basement 1,111 sq.ft.
Total Sq. Ft. 3,361 sq.ft.
Total Finished 2,250 sq.ft.

Bedrooms 3
(Total Possible) (6)
Bathrooms 2.5
(Total Possible) (3.5)

Width 38' - 0"
Depth 48' - 3"