

Quincy



Traditional (standard)



Craftsman (optional)



Farmhouse (optional)



Scandinavian (optional)



4,364 total sq.ft.

2,709 finished sq.ft.

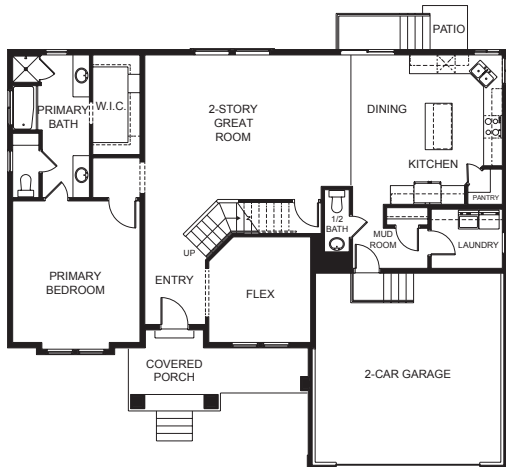


4

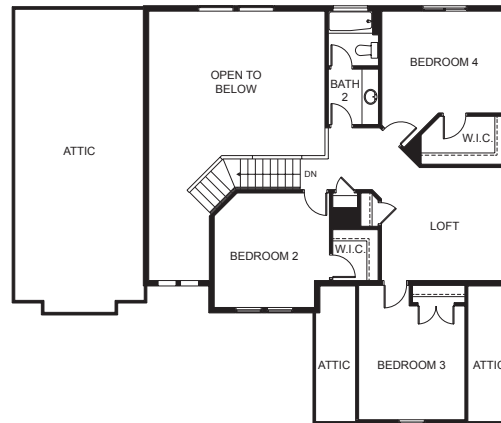


2.5

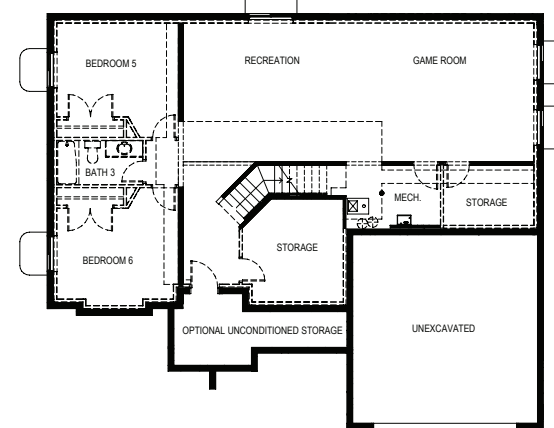
FIRST FLOOR



SECOND FLOOR



BASEMENT



SPECIFICATIONS

First Floor	1,649 sq.ft.
Second Floor	1,060 sq.ft.
Basement	1,655 sq.ft.
Total Sq. Ft.	4,364 sq.ft.
Total Finished	2,709 sq.ft.

Bedrooms	4
(Total Possible)	(6)
Bathrooms	2.5
(Total Possible)	(3.5)

Width	55' - 6"
Depth	46' - 6"