

Quincy



Traditional (standard)



Craftsman (optional)



Farmhouse (optional)



Scandinavian (optional)

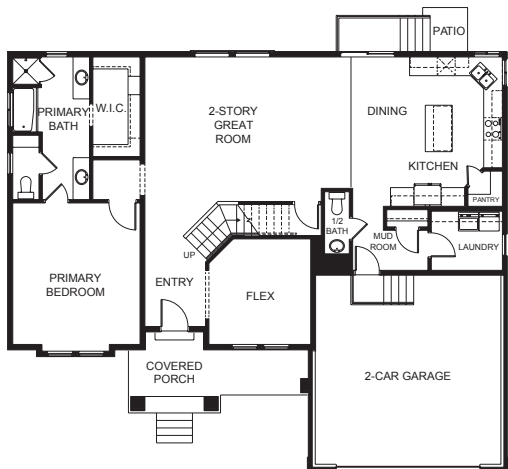
 | 4,317 total sq.ft.

| 2,662 finished sq.ft.

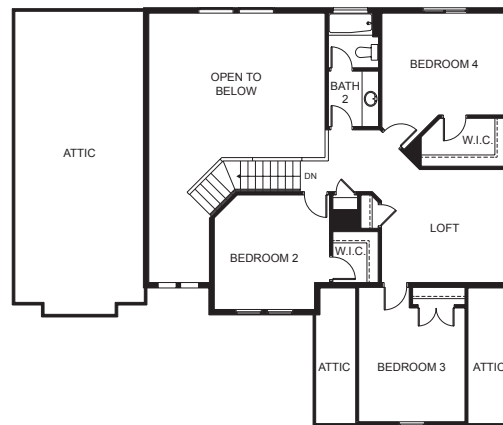
 | 4

 | 2.5

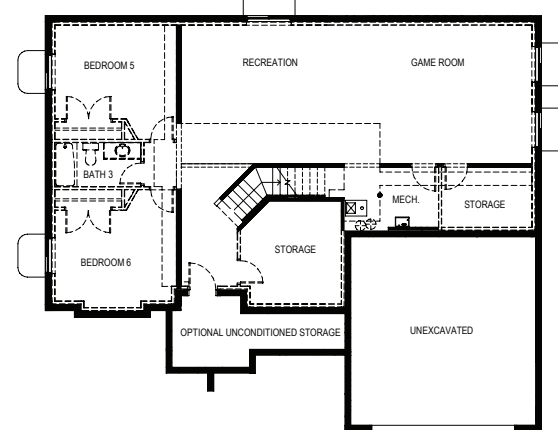
FIRST FLOOR



SECOND FLOOR



BASEMENT



SPECIFICATIONS

First Floor	1,649 sq.ft.
Second Floor	1,013 sq.ft.
Basement	1,655 sq.ft.
Total Sq. Ft.	4,317 sq.ft.
Total Finished	2,662 sq.ft.
Bedrooms	4
(Total Possible)	(6)
Bathrooms	2.5
(Total Possible)	(3.5)
Width	55' - 6"
Depth	46' - 6"

EDGEhomes reserves the right to make changes at any time. Floor plans, dimensions, and elevations are deemed reliable but may be modified. Renderings and floorplans do not depict exact finishes or design. Please verify inclusions with an EDGEhomes agent.