

Paisley



Traditional (standard)

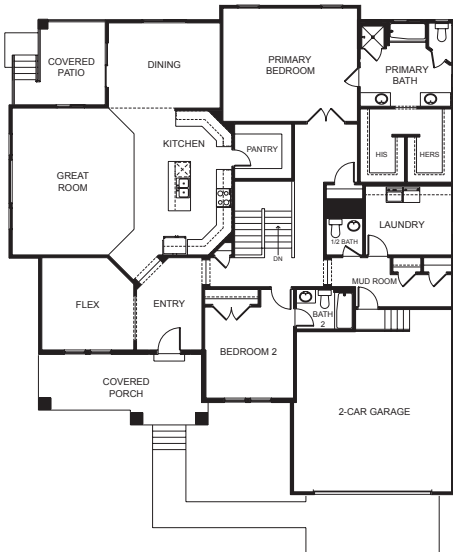


Craftsman (optional)

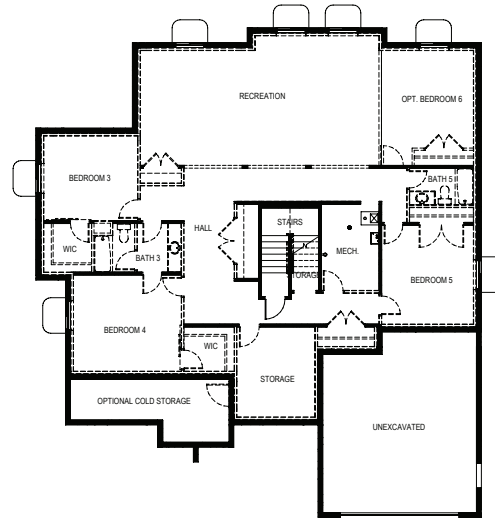
 | **5,036** total sq.ft. | **2,527** finished sq.ft.

 | **2** |  | **2.5**

FIRST FLOOR



BASEMENT



SPECIFICATIONS

First Floor 2,515 sq.ft.
 Basement 2,521 sq.ft.
 Total Sq. Ft. 5,036 sq.ft.
 Total Finished 2,527 sq.ft.

Bedrooms 2
 (Total Possible) (6)
 Bathrooms 2.5
 (Total Possible) (4.5)

Width 60' - 0"
 Depth 66' - 0"