

Landon



Traditional (standard)



Craftsman (optional)



Farmhouse (optional)



4,315 total sq.ft. | 2,175 finished sq.ft.

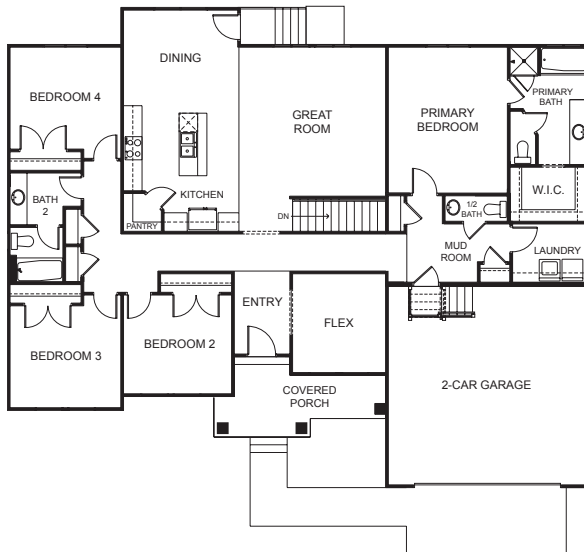


4

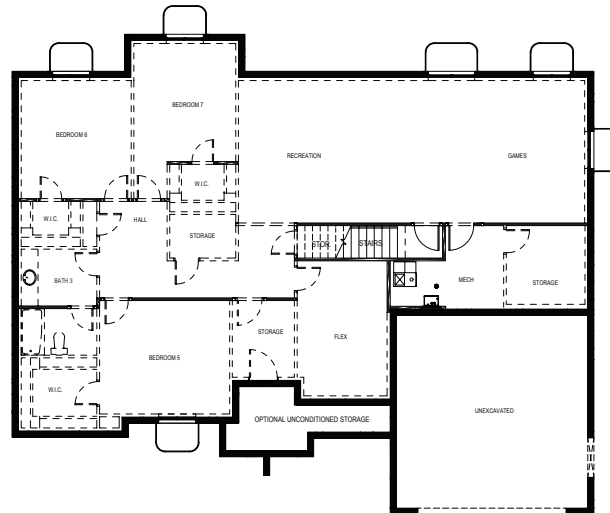


2.5

FIRST FLOOR



BASEMENT



SPECIFICATIONS

First Floor	2,151 sq.ft.
Basement	2,164 sq.ft.
Total Sq. Ft.	4,315 sq.ft.
Total Finished	2,175 sq.ft.

Bedrooms	4
(Total Possible)	(7)
Bathrooms	2.5
(Total Possible)	(3.5)

Width 62' - 10"

Depth 51' - 10"