

Katrina



Traditional (standard)



Craftsman (optional)



Farmhouse (optional)



4,131 total sq.ft. | 2,076 finished sq.ft.

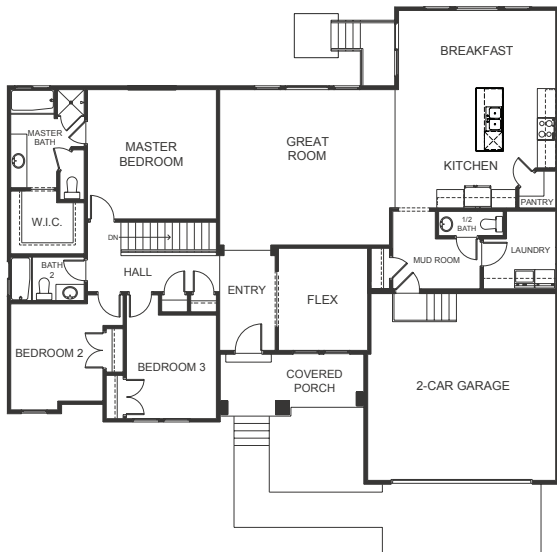


3

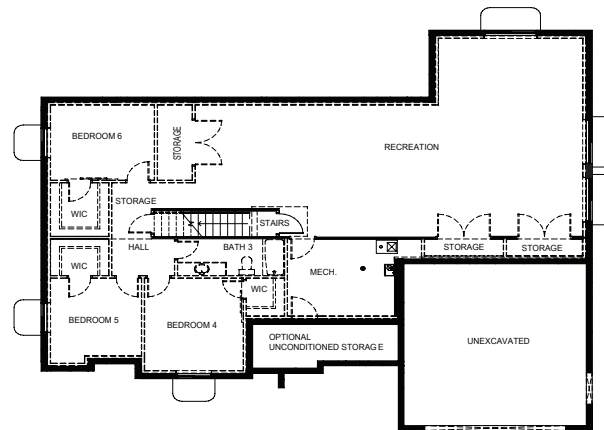


2.5

FIRST FLOOR



BASEMENT



SPECIFICATIONS

First Floor 2,062 sq.ft.
 Basement 2,069 sq.ft.
 Total Sq. Ft. 4,131 sq.ft.
 Total Finished 2,076 sq.ft.

Bedrooms 3
 (Total Possible) (6)
 Bathrooms 2.5
 (Total Possible) (3.5)

Width 62' - 6"
 Depth 54' - 0"