

Hailey



Traditional (standard)



Craftsman (optional)



Farmhouse (optional)



3,502 total sq.ft. | 1,772 finished sq.ft.

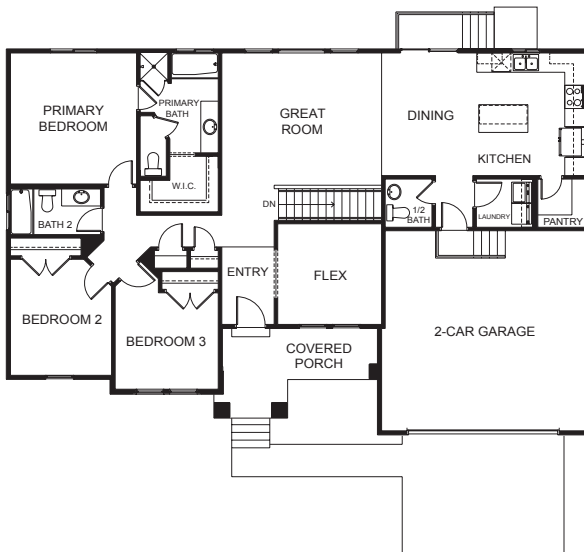


3

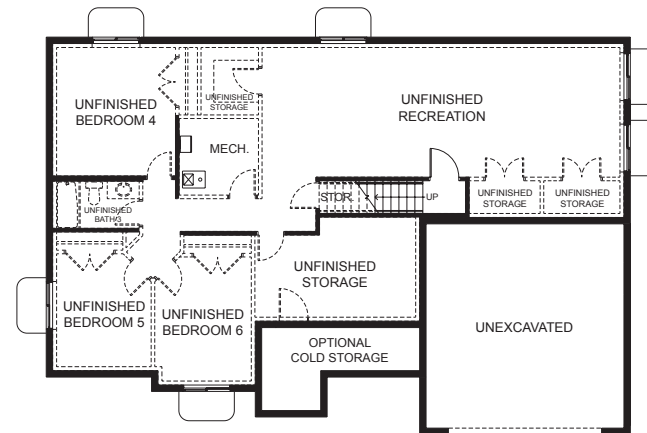


2.5

FIRST FLOOR



BASEMENT



SPECIFICATIONS

First Floor	1,748 sq.ft.
Basement	1,754 sq.ft.
Total Sq. Ft.	3,502 sq.ft.
Total Finished	1,772 sq.ft.
Bedrooms	3
(Total Possible)	(6)
Bathrooms	2.5
(Total Possible)	(3.5)
Width	61' - 0"
Depth	41' - 6"