

Ethan

Bedrooms Finished **3** (6)
(Total Possible)

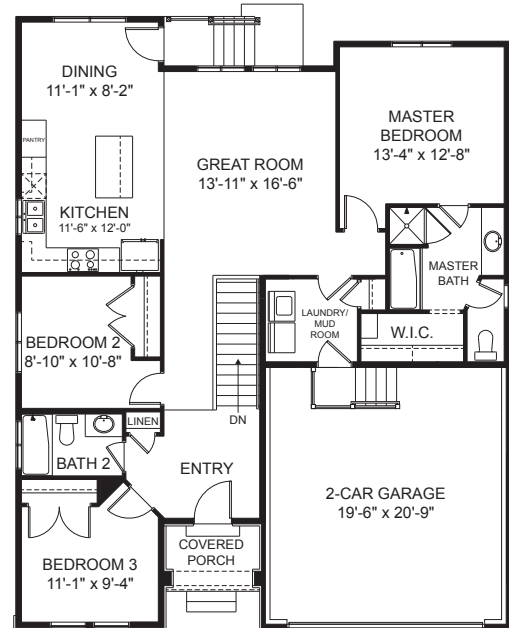


Traditional (standard)

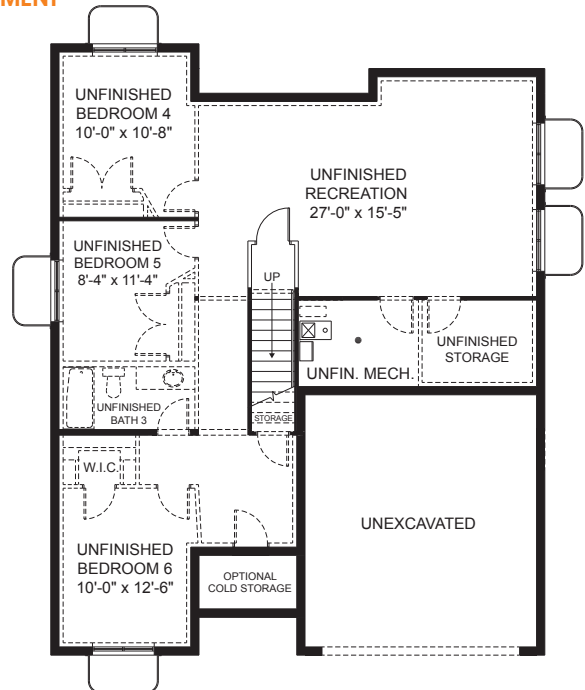


Craftsman (optional)

FIRST FLOOR



BASEMENT



First Floor	1,410 sq.ft.	Bedrooms	3	Width	40'-0"
Basement	1,396 sq.ft.	(Total Possible)	(6)	Depth	49'-6"
Total Sq. Ft.	2,828 sq.ft.	Bathrooms	2		
Total Finished	1,432 sq.ft.	(Total Possible)	(3)		